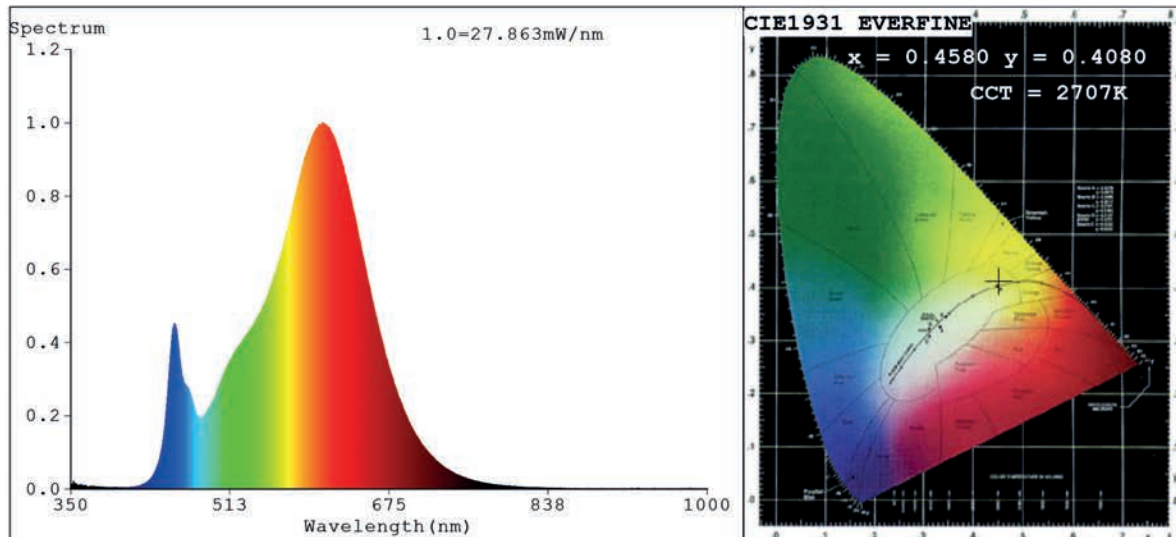


Spectrum Test Report



Color Parameters:

Chromaticity Coordinate: $x=0.4580$ $y=0.4080$ $u'=0.2624$ $v'=0.5261$
 CCT=2707K (Duv=-0.0008) Dominant WL:Ld =584.4nm Purity=60.0%
 Ratio:R=25.4% G=72.1% B=2.5%; Peak WL:Lp=607.2nm FWHM=112.8nm
 Render Index:Ra=83.1 CRI=78.8 TM30:Rf=82 Rg=95
 R1 =83 R2 =94 R3 =93 R4 =80 R5 =83 R6 =94 R7 =80
 R8 =58 R9 =11 R10=87 R11=80 R12=77 R13=86 R14=97 R15=75

Photo Parameters:

Flux = 1252 lm Eff. : 128.21 lm/W Fe = 3.907 W

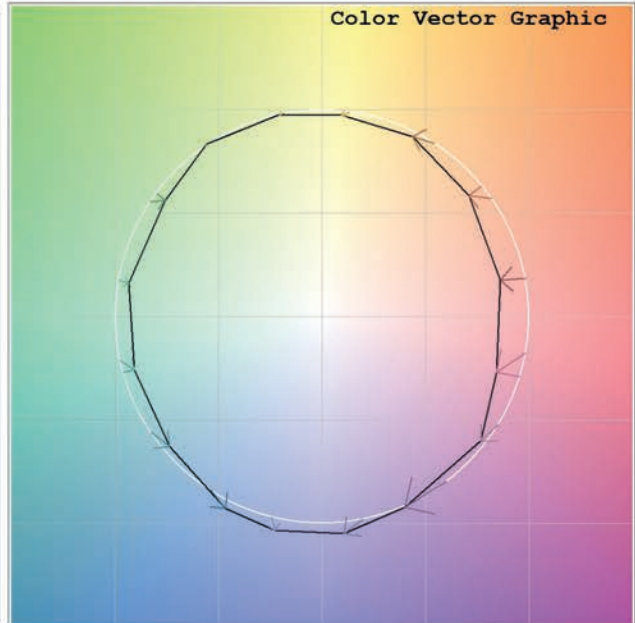
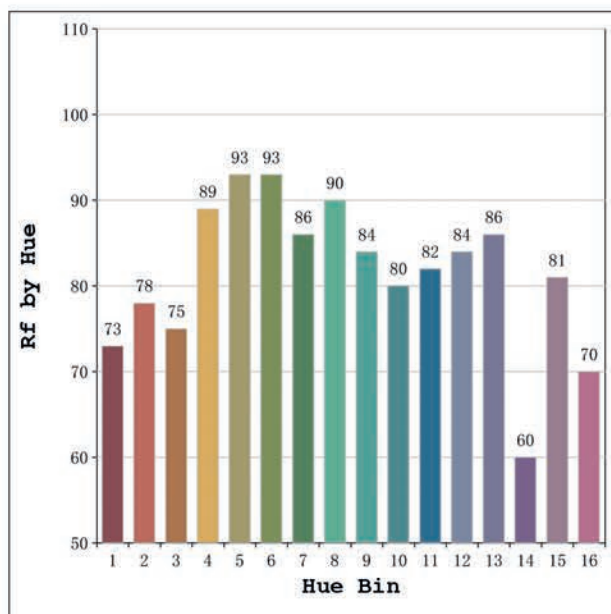
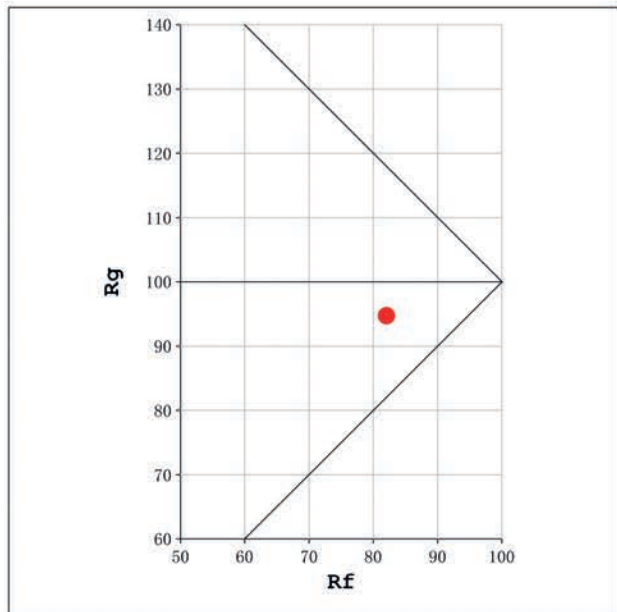
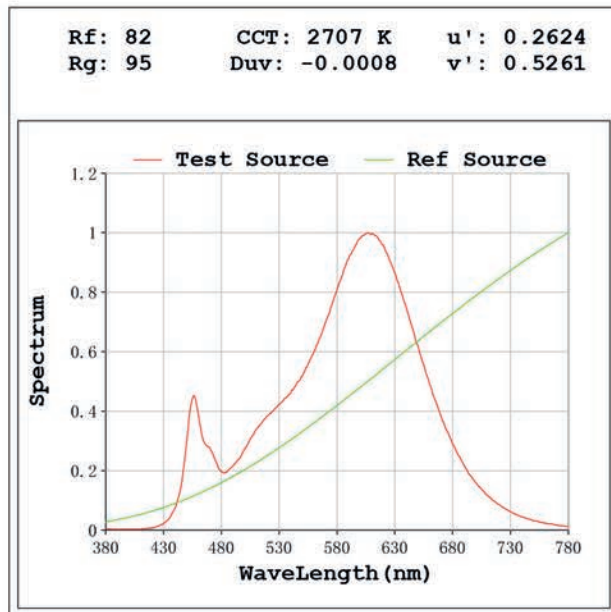
Electrical parameters:

V = 23.998 V I = 0.4069 A P = 9.765 W PF = 1.000

Status: Integral T = 773 ms Ip = 42230 (64%)

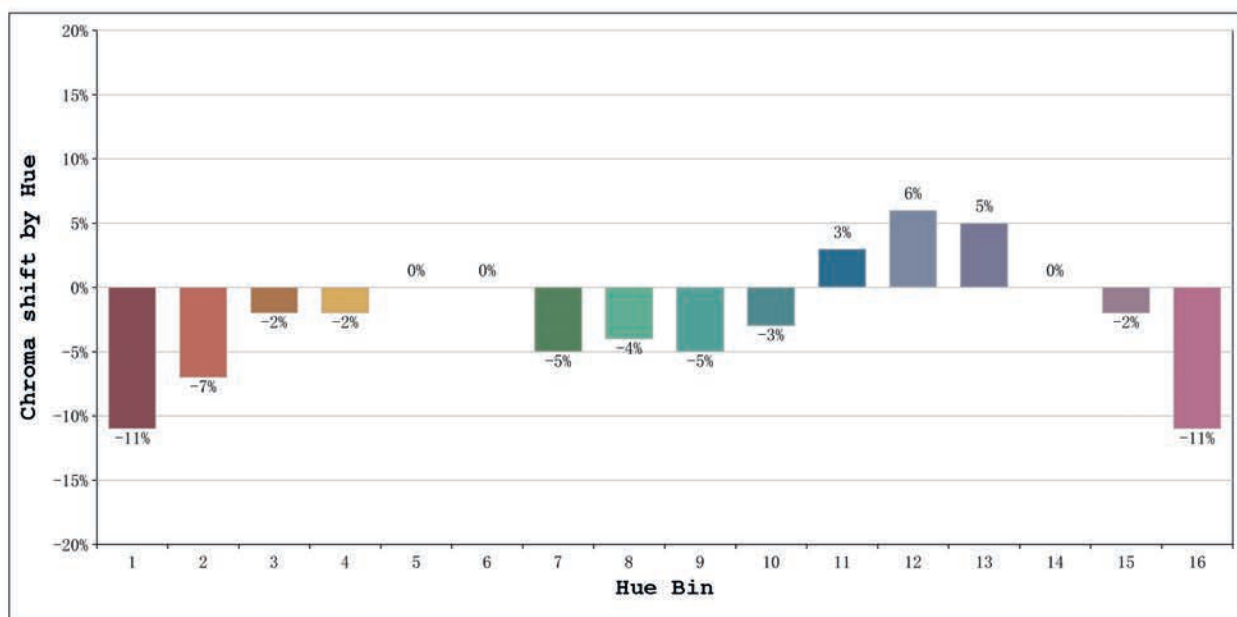
Model:Élite 10 2700k
 Tester:Sergio Carneros
 Temperature:21Deg
 Manufacturer:Luz Negra S.L

Number:31.202
 Date:2025-01-14 13:31:06
 Humidity:41%
 Remarks:100cm de tira flexible



Model:Élite 10 2700k
 Tester:Sergio Carneros
 Temperature:21Deg
 Manufacturer:Luz Negra S.L

Number:31.202
 Date:2025-01-14 13:31:06
 Humidity:41%
 Remarks:100cm de tira flexible



			Graphic shift(%)	
Hue Bin	Hue Angle	Rf	Chroma	Hue
1	0.0° - 22.5°	73	-11	2
2	22.5° - 45.0°	78	-7	8
3	45.0° - 67.5°	75	-2	11
4	67.5° - 90.0°	89	-2	3
5	90.0° - 112.5°	93	0	3
6	112.5° - 135.0°	93	0	0
7	135.0° - 157.5°	86	-5	-4
8	157.5° - 180.0°	90	-4	1
9	180.0° - 202.5°	84	-5	6
10	202.5° - 225.0°	80	-3	10
11	225.0° - 247.5°	82	3	11
12	247.5° - 270.0°	84	6	3
13	270.0° - 292.5°	86	5	-9
14	292.5° - 315.0°	60	0	-22
15	315.0° - 337.5°	81	-2	-10
16	337.5° - 360.0°	70	-11	-11

Model:Élite 10 2700k
 Tester:Sergio Carneros
 Temperature:21Deg
 Manufacturer:Luz Negra S.L

Number:31.202
 Date:2025-01-14 13:31:06
 Humidity:41%
 Remarks:100cm de tira flexible